

# Brainstorm 2006

Events are open to the public at no cost

## The Path to Autism

*Early Diagnosis and Follow-up of Children with Autistic Spectrum Disorders*

**Thursday • March 2 • 4:10 P.M.**  
**241 MRL / Kennedy Center**

**Catherine Lord, Ph.D.**

*Professor of Psychology and Psychiatry,  
 Director, Autism and Communication  
 Disorders Center, University of Michigan*



Refreshments immediately following the presentation

Parking is available in spaces 52-170 at the Wesley Place Garage on 21st Avenue South and Scarritt Place

\*Co-Sponsor: Vanderbilt Kennedy Center for Research on Human Development

## Brain Blast 2006

**Saturday • March 4 • 11:00 A.M. - 3:00 P.M.**  
**Nashville Adventure Science Center**



Come to the Nashville Adventure Science Center and enjoy a variety of hands-on activities led by Vanderbilt neuroscience undergraduates, graduate students, and faculty. Brain Blast is free, but participants must pay the museum entry fee.

\*Co-Sponsor: Adventure Science Center

## A New View for Alzheimer's

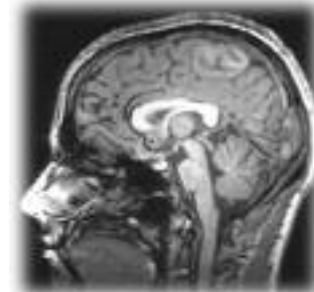
*Neuroimaging in Alzheimer's Disease*

**Thursday • March 9 • 4:00 P.M.**  
**202 Light Hall**

**John Csernansky, M.D.**

*Gregory B. Couch Professor of Psychiatry,  
 Director, Silvio O. Conte Center for Neuroscience Research,  
 Washington University, St. Louis*

Refreshments immediately following the presentation



Parking is available in the South Parking Garage, 2200 Children's Way

\*Co-Sponsors: Vanderbilt Department of Psychiatry & Vanderbilt University Institute for Imaging Sciences

**Brainstorm Schedule**  
**(615) 936-2637**



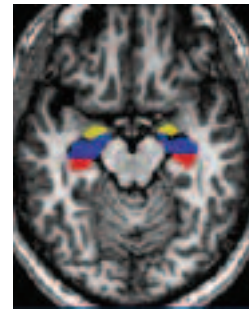
## Brain Awareness Keynote Address Tracking Schizophrenia

*Is There a Neuroanatomy of Schizophrenia?*

**Wednesday • March 15**  
**4:10 P.M. • 103 Wilson Hall**

**Stephan Heckers, M.D.**

*James G. Blakemore Professor and Chairman,  
 Department of Psychiatry, Vanderbilt University*



Opening remarks by Ronald L. Cowan, M.D., Ph.D.  
*Program Director, 2006 Vanderbilt-MTNCSfN Brain Awareness*

Introduction by Herbert Y. Meltzer, M.D.  
*Bixler Professor of Psychiatry and Pharmacology,  
 Vanderbilt University*

Reception immediately following the presentation

Parking is available in spaces 52-170 at the Wesley Place Garage on 21st Avenue South and Scarritt Place

\*Co-Sponsor: Vanderbilt Center for Integrative and Cognitive Neuroscience

## Meeting Addiction Head On

*Endorphins, Stress and the Addictions*

**Thursday • March 23 • 1:15 P.M.**  
**214 Light Hall**

**Mary Jeanne Kreek, M.D.**

*Professor and Head, Laboratory of the  
 Biology of Addictive Diseases,  
 The Rockefeller University*

Refreshments immediately following the presentation

Parking is available in the South Parking Garage, 2200 Children's Way

\*Co-Sponsors: Vanderbilt Department of Psychiatry & Vanderbilt Center for Molecular Neuroscience



## You Snooze, You Lose!

*The National Sleep Debt: A Role in the Epidemic of Obesity?*

**Thursday • March 30 • 6:00 P.M.**  
**Nashville Adventure Science Center**

**Eve Van Cauter, Ph.D.**

*Professor of Medicine,  
 Director, Research Laboratory on Sleep,  
 Chronobiology and Neuroendocrinology,  
 University of Chicago*



Refreshments immediately following the presentation

\*Co-Sponsors: Vanderbilt Department of Psychiatry,  
 Vanderbilt Sleep Disorders Center  
 & Nashville Adventure Science Center